

# Accessories WED-190

Based on varies transducers options, and the related accessories supported.  
We can offer an ideal solution that meets the needs of your clinical and hospital interests



**Options:**

- Luggage
- Printer
- Battery
- Trolley

**WELLD**  
Tech for health

Three Probes B/W scanner with PW  
**WED-190**  
Clear image | Unique structure | Easily use



15 inch Large Screen  
AUI Image  
Sharp Tech

Multi-frequency Probes



3.5MHz Convex Probe    7.5MHz Linear Probe    5.0MHz Micro-convex Probe    6.5MHz Transvaginal Probe    7.5MHz Endorectal Probe

**SHENZHEN WELL.D MEDICAL ELECTRONICS CO., LTD**  
Add: Qing Lan 3rd Rd, Well.d Industrial Park, Biopharmaceutical Base,  
Pingshan New Area, Shenzhen,  
Tel: +86 (755) 36900018  
Email: export@welld.com.cn

For More Information, please visit us at [www.welld.com.cn](http://www.welld.com.cn)  
2019. Shenzhen Well.d Medical Electronics Co.,Ltd. All rights Reserved  
All Precautions can be referenced from User Manual.

**HONGDA** Member of Hongda High-tech  
Stock Code: 002144

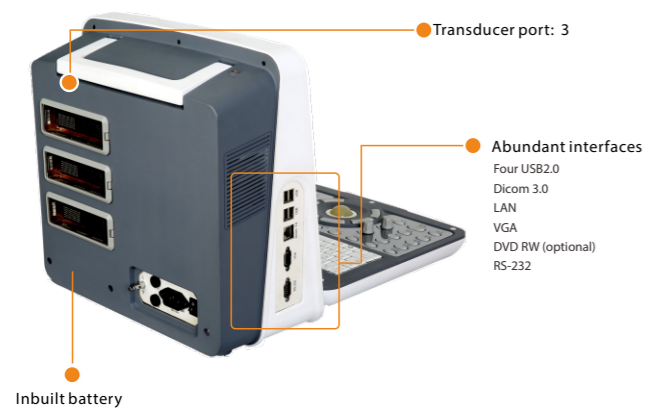
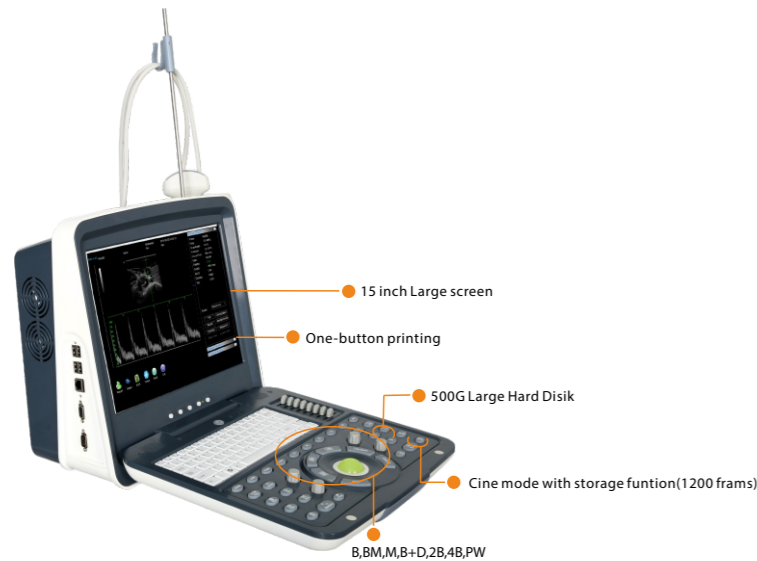
version number: V1.0



WECHAT

## Three Probes B/W scanner with PW **WED-190**

Pulsed wave (PW) Doppler in B/W ultrasound makes it possible to accurately measure the doppler Clinical items under a limited financing budget, and free your worry of high cost for a color doppler machine. With the advanced imaging technology(AUI Techno), The WED-190 provides crisp and clear diagnostic images.



### Clear image

Based on the Pulse Inversion Tissue Harmonic Imaging (PITHI)<sup>①</sup> and Speckle Reduction Imaging<sup>②</sup> guarantee pleasant image presentation.

### Unique structure

3 transducer ports design helps you scan much quickly and efficiently if two or three probes involved, and tremendously reduces your spending for the second and third probe if required.

Large storage capacity of 500G for bulk images and reports saving.

### Easily use

The combined keyboard and menu navigation on the screen make it uncomplicated for beginners to find their way. Just click one button on screen to print out your preferred images.

### Abundant application:

General, OB/GYN, abdomen, vascular, urology, small organs,MSK, superficial, basic cardiac, etc

### Standard measurement:

2D measurement: distance, area, circumference, angle, volume, Stenosis diameter, stenosis area  
PWD measurement: RI, peak, RT, flow volume, PI, HR

**Imaging modes:** B,B+D,B+M,M,2B,4B,PW

### Image process

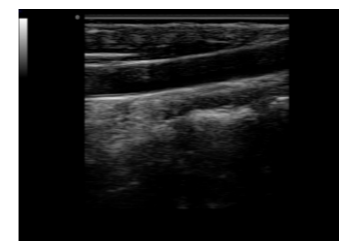
Image smoothing, THI, pseudo color, histogram, zoom, frameAVG, linAVG, density, Gain, Focus, AUI Techno

**Image Conversion:** up/down, left/right, black&white



Screen Size:	15 inch
Transducer ports:	3
Grey scale:	256
Scanning Depth:	40mm-250mm
Cine-loop:	1200 frames
Image Storage:	Large Hard Disk Saving
Hard disk:	500 G
Local zoom:	10 times (real time and freeze)
Body marks:	98
Interfaces:	4 x USB 2.0, Video, VGA, Dicom 3.0, RS-232
Power supply:	AC 100V-240V, 50Hz/60Hz/Rechargeable Battery
Weight:	10 KG
Packing dimension (in cm):	L 56 x W 48 x H 48

### Excellent Image Quality



①Pulse Inversion harmonic Imaging Makes a dramatically cleaner and sharper contrast between the different structures of biologic tissues  
②Speckle reduction imaging Significantly makes the 2D images smoother and clearer